



# Company Profile

Cooling Tower Services

Next →







# About Us

**Evertech Cooling** specializing in cooling tower services, backed by deep experience and a skilled team, committed to delivering reliable support to every client.

## Vision



To set the standard in cooling tower care with forward-thinking solutions and trusted service.

## Mission



Delivering reliable cooling tower care that improves performance and maximize life span.







# Our Services

- 1 **Cooling Tower Customs Design & Installation.**
- 2 **Cooling Tower Maintenance and Repair.**
- 3 **Cooling Tower System Upgrades and Retrofits.**
- 4 **Cooling Tower Performance Test.**
- 5 **Cooling Tower Spare Parts Provider. (Gearbox, Fan Blade, Fan Stack, Drift Shaft, Spray Nozzle, Etc).**



# Our Services

- 6 Revamp, Overhaul, Coating & Upgrade Cooling Tower Parts.**
- 7 Cooling Tower Field Balance, Vibration Test and Alignment.**
- 8 Cooling Tower Fill Pack, Drift Eliminator Installation & Cleaning , Basin Cleaning.**
- 9 Emergency Response Services.**
- 10 Cooling Tower Warranty – Performance, Material, Services**



# Projects reference

## **NOBEL NC CHAINAT**

Cooling Tower Improvement

## **AYUTHAYA BANK HEAD OFFICE BANGKOK**

Cooling Tower Improvement

## **MICHELIN MCL SARABURI**

Cooling Tower Improvement

## **SIAM SQUARE ONE BANGKOK**

Cooling Tower Improvement

## **IRPC UHV RAYONG**

Cooling Tower Performance Test

## **GJS STEEL CHONBURI**

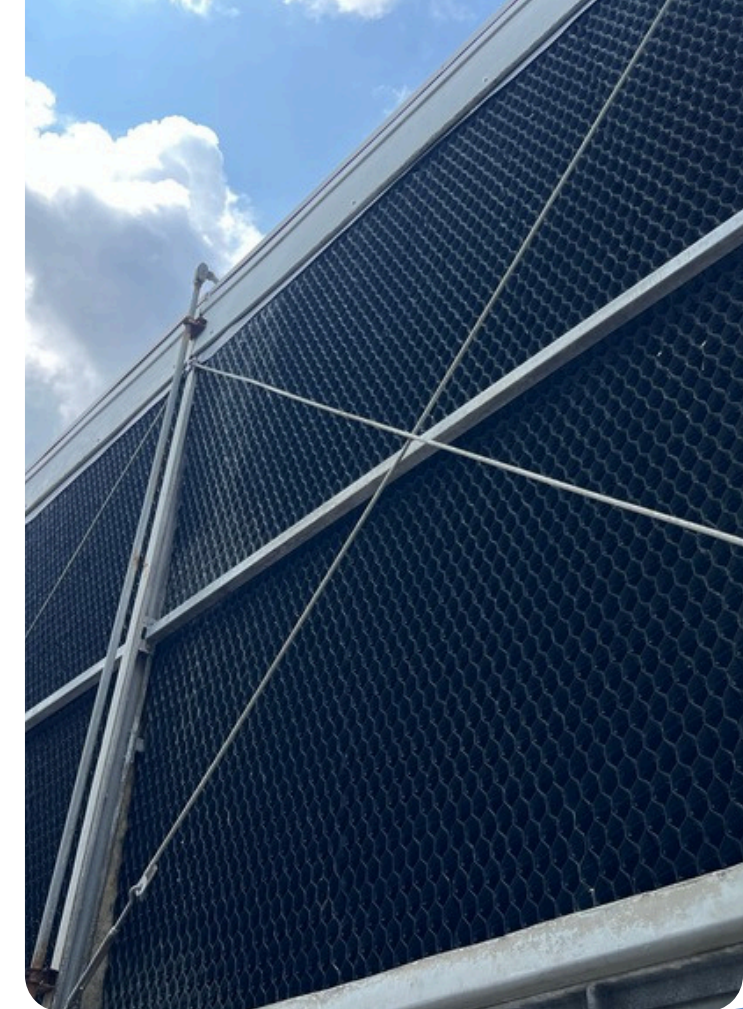
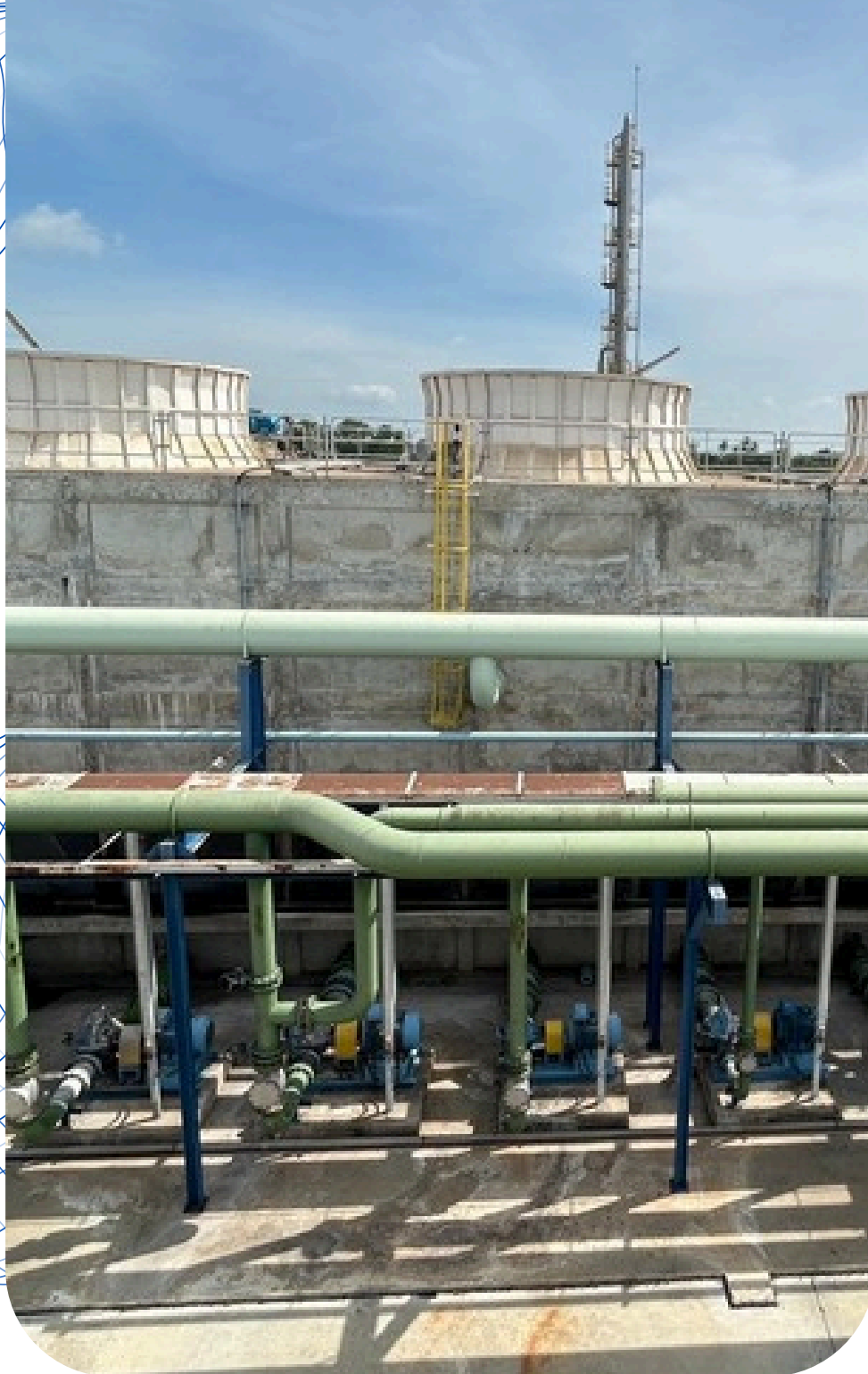
FRP Fan Stack Replacement

## **SILATHONG ORGANIC BIOMASS KAMPHAENG PHET**

Cooling Tower Improvement

## **PT.PLN POWER PLANT INDONESIA**

Supervision & Cooling Tower  
Improvement

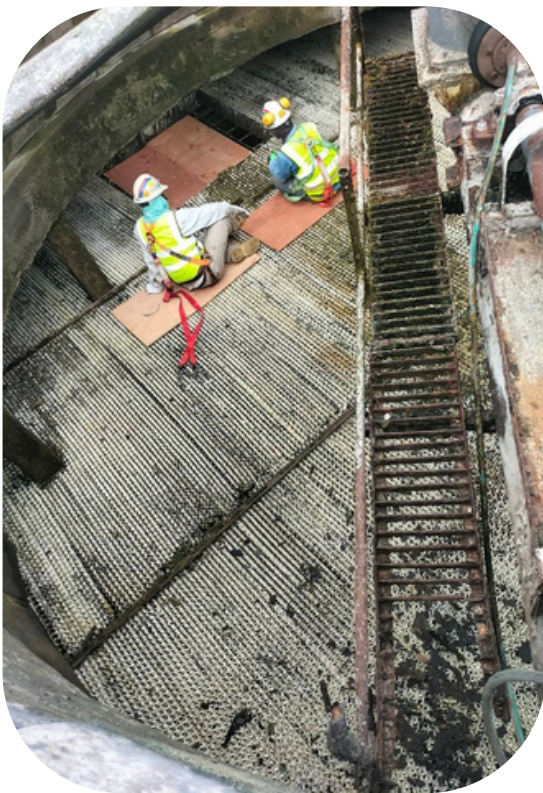




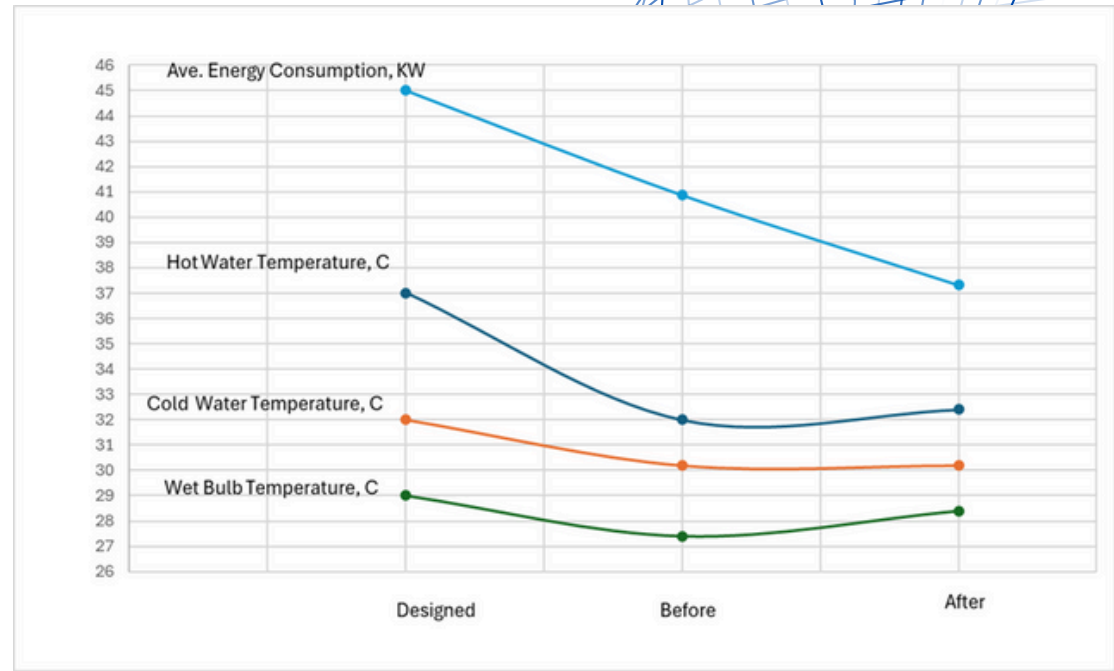
# Projects reference

## NOBEL NC CHAINAT

Cooling Tower Improvement by Replace Drift Eliminator  
Fan, Gearbox, Motor Inspection, Adjust & Alignment.



Performance Test.

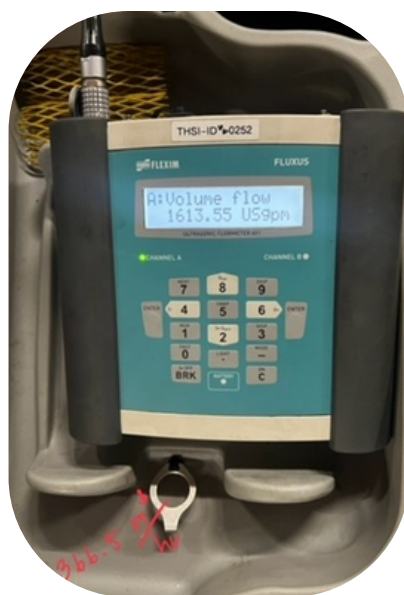




# Projects reference

## AYUTHAYA BANK HEAD OFFICE BANGKOK

Cooling Tower Improvement by Replace Infill, Drift Eliminator, Spray Nozzle, Inspection Fanblade, Stack, Gearbox.



Tower Condition	Dewsigned/EXISTING	Operated 20Sep.2024
<b>Thermal Conditions.</b>		
Fills Type	Double CrossFlow Tower	Double CrossFlow Tower
Number of Cells	4	Cell 2 and Cell 3
Flow for 1cells, M3/Hr (2250 US GPM)	511.00	686.50
Total Flow for 1cells, M3/Hr (2250 US GPM)	2,044.00	343.25
Hot Water Temperature, C (100 F)	37.70	35.90
Cold Water Temperature, C (90 F)	32.20	30.10
Wet Bulb Temperature, C	28.33	26.90
Temperature Rang, C	5.50	5.80 C or 10.44 F
Approch Temperature, C	3.87	3.20
Power Require, KW	22.00	15.35
Fan. Dia, m	3.660	3.660
Air Travel, m	1.22	1.22
Cell Length, m	7.32	7.32
Fan Stack Height, m	1.83	1.83
<b>RESULT</b>		
Predicted Flow Rate to meet 100%, M3/Hr		380.30
Tower Capability @ Design Condition, %	100.00%	90.26%
Predicted CWT, C to achived 100% tower Capability, C		29.68



# Projects reference

## SIAM SQUARE ONE BANGKOK

Cooling Tower Improvement by Replace Infill, Drift Eliminator, Spray Nozzle, Inspection Fanblade, Stack, Gearbox.

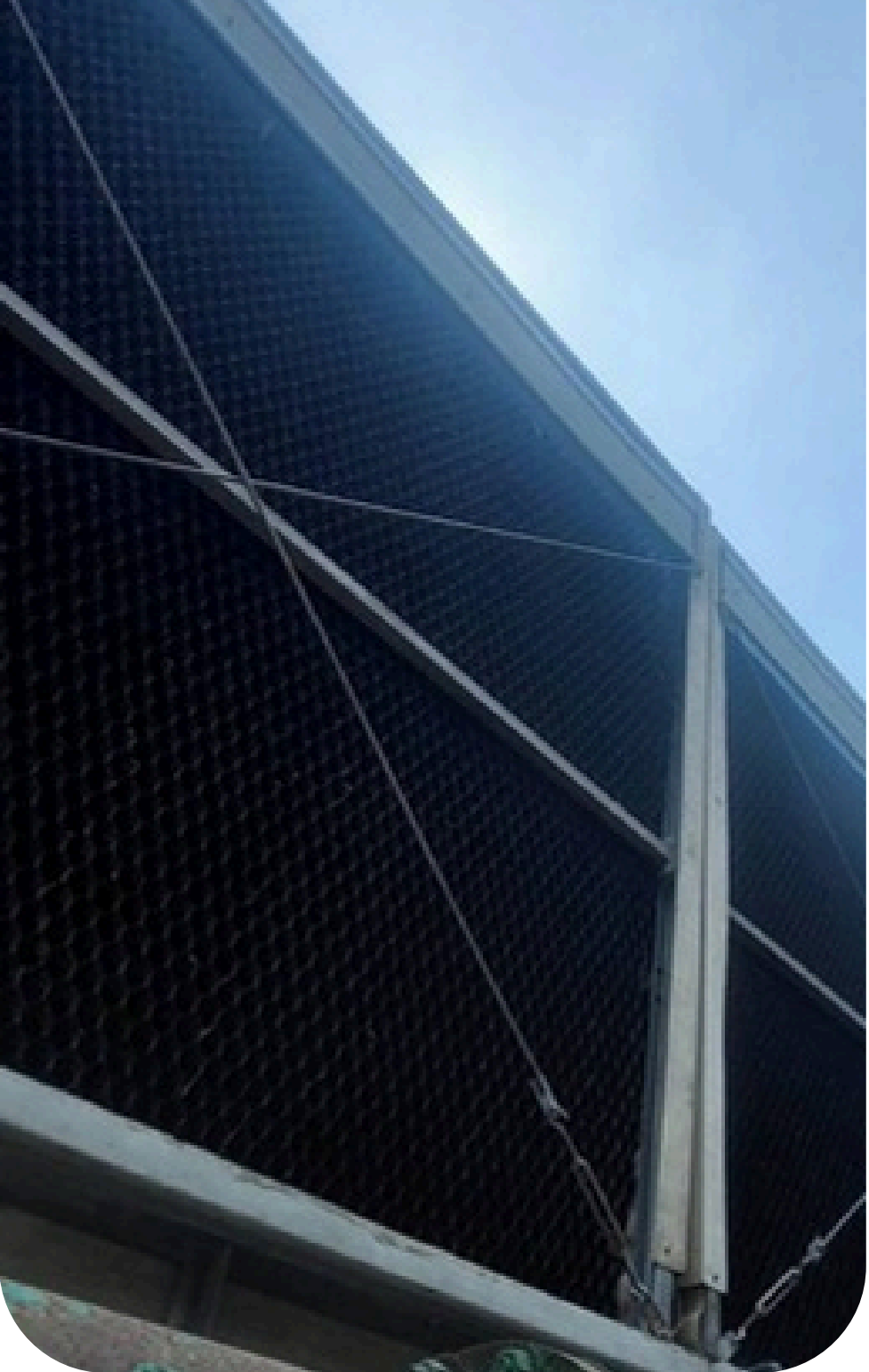


Tower Condition	Existing (Design Condition with XF75)	Existing (Design Condition with XF75 and 5.5 KW motor)	Operated 08-Apr-2024
Fills Type	Double Crossflow Tower (Brentwood XF75)	Double Crossflow Tower (Brentwood XF75)	Double Crossflow Tower (Brentwood XF75)
Number of Cells	4	4	12
Total Flow , M3/Hr.	681.40	681.40	1,128.00
Flow Rate for 1cells, M3/Hr.	170.35	170.35	94.00
Hot Water Temperature, C	37.82	37.82	35.40
Cold Water Temperature, C	32.22	32.22	30.69
Wet Bulb Temperature, C	28.33	28.33	29.44
Temperature Rang, C	5.60	5.60	4.71
Approach Temperature, C	3.89	3.89	1.25
Power required ; KW	7.50	5.50	5.72
Fan. Dia, m	2.200	2.200	2.200
Air travel, m	1.220	1.220	1.220
Cell Length, m	2.440	2.440	2.440
Fan Stack Height, m	0.610	0.610	0.610
Result			
Predicted Flow Rate to meet 100%, M3/Hr.	681.40	615.30	1,078.37
Predicted Cold Water, C	32.22	32.84	30.8
Range, C	5.60	4.98	4.60

Current Tower Capacity

105%

Table 1: Comparative data





# Performance Test

## TOOLS



WATER FLOW METER



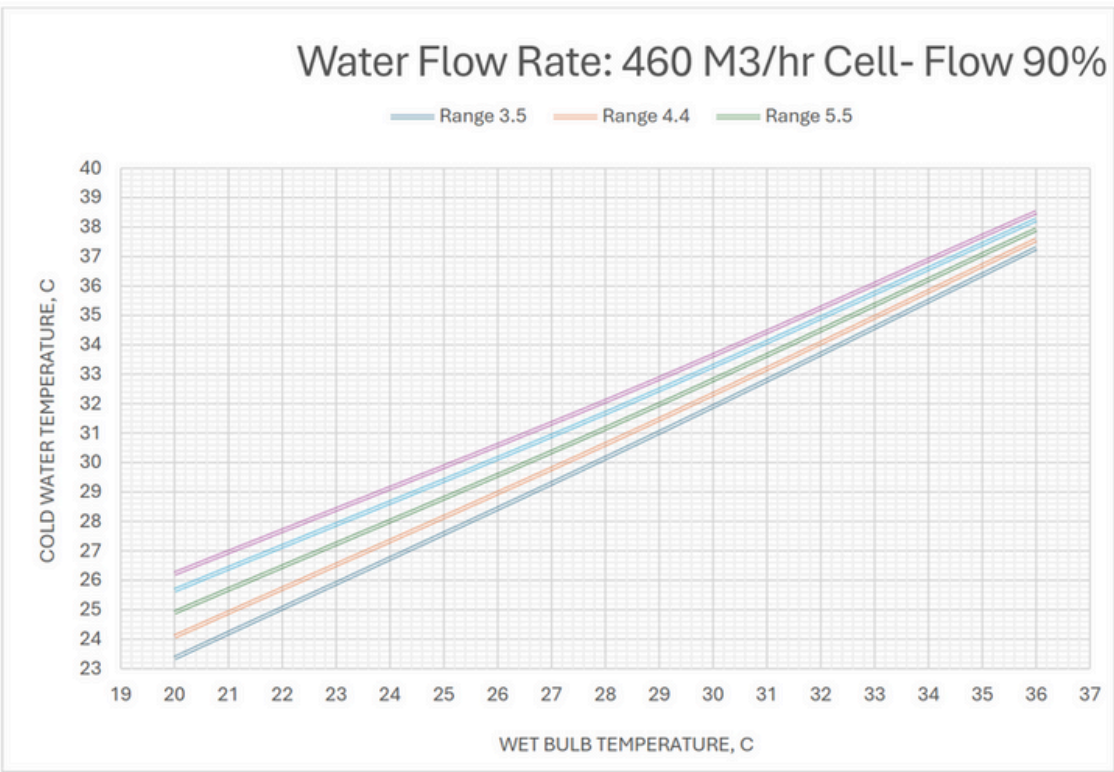
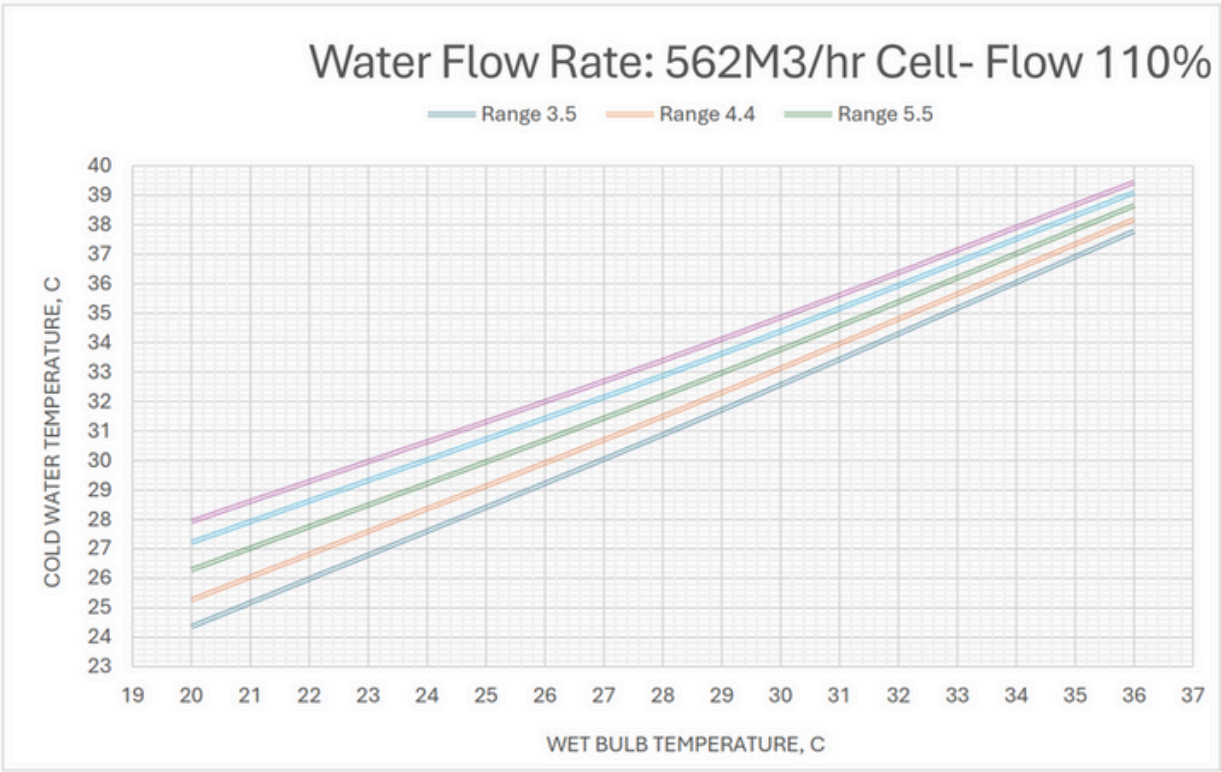
WBGT METER



WATER TEMPERATURE



AIR VELOCITY METER

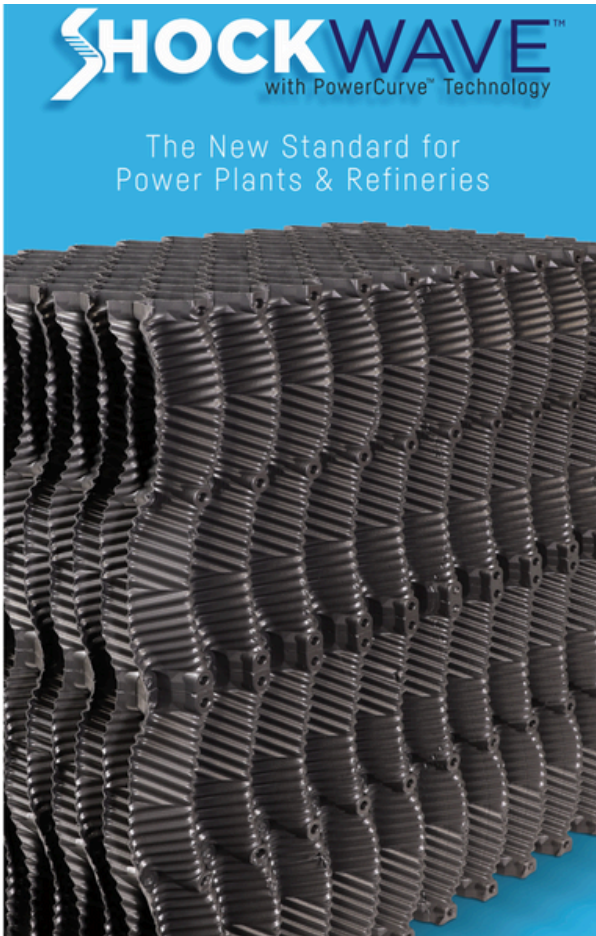
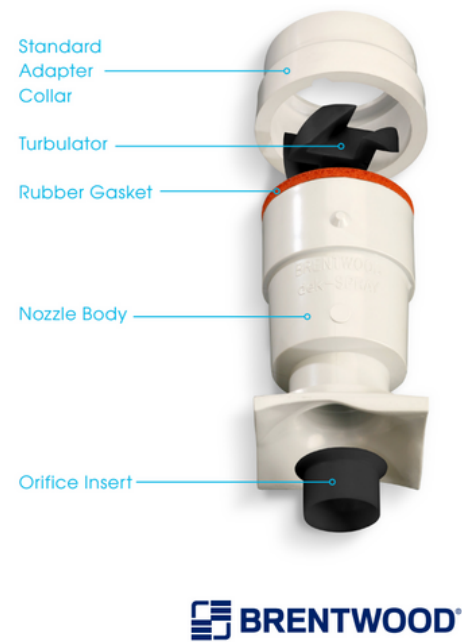




# Our Products



FRP Fan Stack



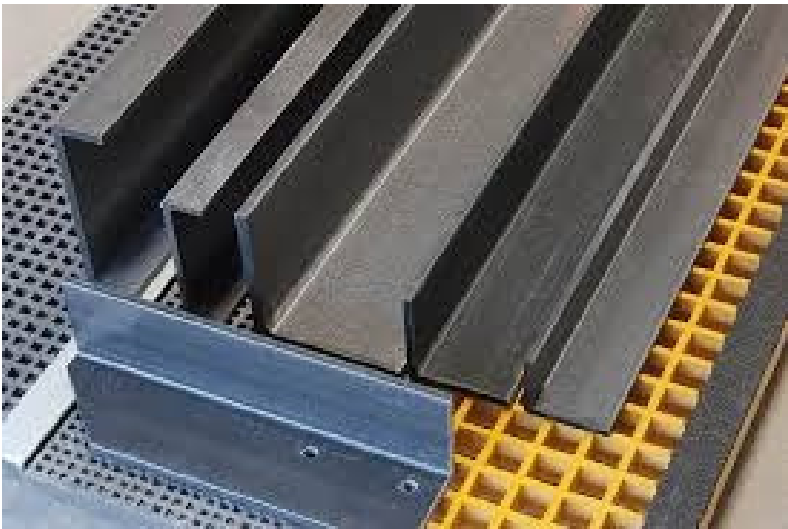
Brentwood Fillpack



Spray Nozzle



Fan Blade



FRP Structure



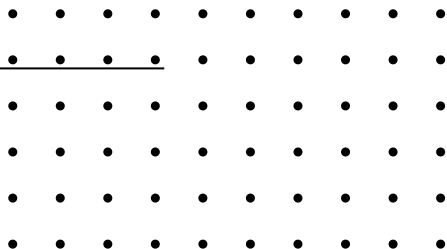
Gearbox



Composite Drift Shaft



Brentwood Drift Eliminator





# Contact Us



Phone

**+66 (0)88 684 8338**

**+66 (0)90 989 9146**



Email

**sales@evertechcooling.com**



Website

**www.evertechcooling.com**



Address

**249/34 M.2 Banchang Rayong 21130  
Thailand.**

